

**Site Location Plan 1:2500 @ A1**

**DAMERS FIRST SCHOOL**

Application No. WD/D/14/001915

APPENDIX 1 SITE LOCATION PLAN

  
Dorset County Council

**ENVIRONMENT  
DIRECTORATE**  
M D PILES  
Head of Economy



**Damers First School, Poundbury.**

**Application No. WD/D/14/001915**

**Appendix 2 Block Plan**

  
Dorset County Council

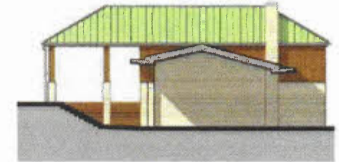
**ENVIRONMENT  
DIRECTORATE  
M D PILES  
Head of Economy**



1 North Wing/North Elevation



2 North Wing/South Elevation



2A Coach House South Elevation



3 South Wing/North Elevation



4 N&S Wings/East Elevation (elevations viewed square)

1A Coach House North Elevation



5 West Wing/East Elevation (elevations viewed square)



6 West Wing/West Elevation (elevations viewed square)



P6 - Issued with Stage 3 Planning Application - KLS (21.07.14)  
P5 - Issued with Stage 2 Planning Application - KLS (14.07.14)  
P4 - Plinth and finials added, hall roof amended to 17.5° pitch, high level windows to hall amended, detail added to windows and doors and general amendments- TW (20.06.14)  
P3 - Work In Progress issue - NH (21.05.14)  
P2 - Work in progress update - TW (02.05.14)  
P1 - Preliminary issue - NH (30.04.14)

## DAMERS FIRST SCHOOL

Application No. WD/D/14/001915

### APPENDIX 3 PLANS AND ELEVATIONS OF THE SCHOOL BUILDING



ENVIRONMENT  
DIRECTORATE  
M D PILES  
Head of Economy